

OPERATING INSTRUCTIONS AND SPARE PARTS LIST



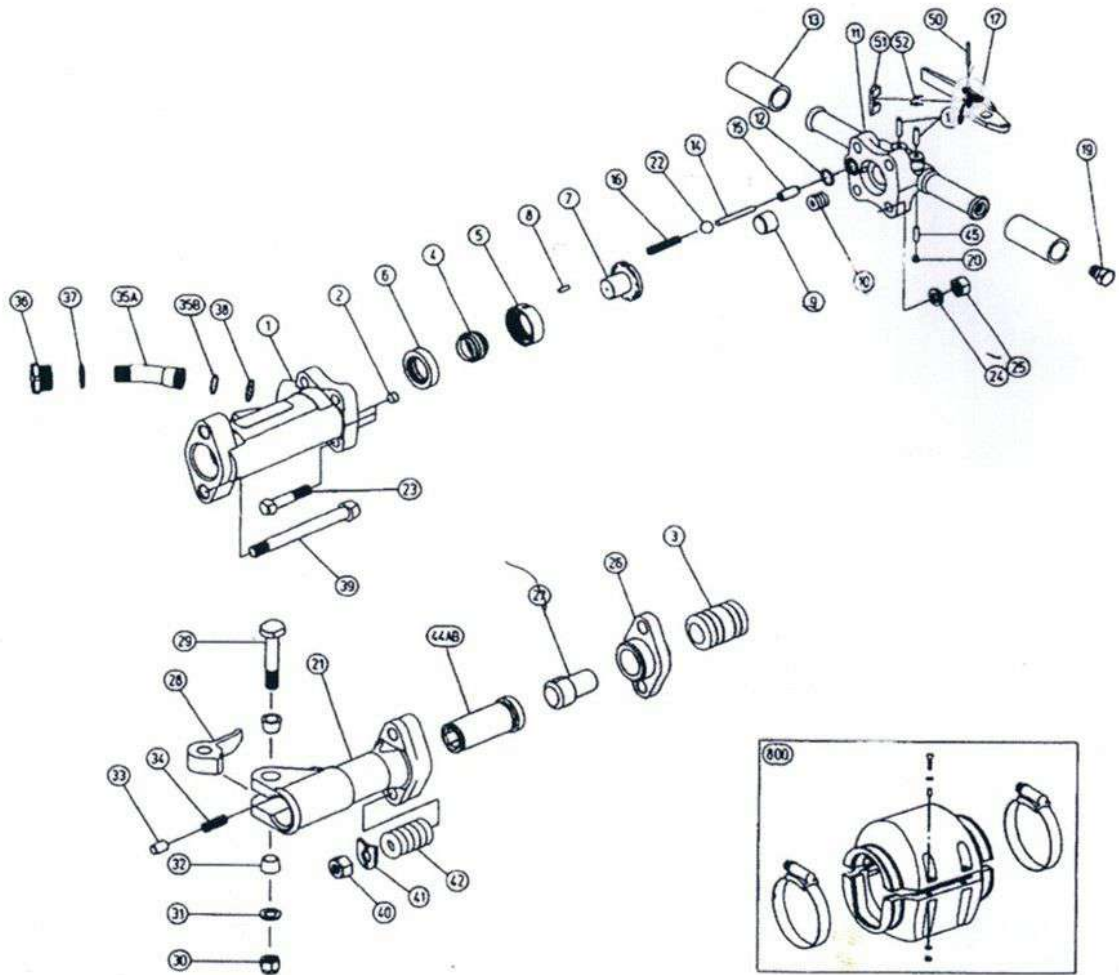
TPB-60 Pneumatic Breakers

Scope of application

TPB-60 Pneumatic breakers are simple in design and easy to operate. They are designed for vertical demolition of concrete, asphalt, frozen soil and other hard materials in road construction, installation and other demolition work. No other use is permitted.

TPB-60 pneumatic breakers get power from compressed air which is distributed alternatively to two ends of the cylinder by valves, making the hammer shuttle to strike the tail of the steel chisel into the concrete. Then the concrete is broken into pieces.

EXPLODED VIEW:



SPECIFICATIONS:

MODEL	SHANK	WEIGHT	HOSE SIZE	AIR INLET	BLOW	AIR CONSUMPTION	LENGTH	PISTON DIA	PISTON STROKE
	INC	KG (LB)	MM(INC)	PT(NPT)	(B.P.M)	M3/M N(C.F.M.)	MM(INC)	MM(INC)	MM(INC)
TPB-60	1-1/8x6 Or 1-1/4x6	30.0 (66.0)	19.0(3/4)	3/4"	1, 400	2.0(70)	645(25-3/8)	57.15(2-1/4)	100(4)

Spare Parts Service Chart

Parts List

Symbol NO.	Parts No.	Q'ty Req	Description	MUST REPLACE	100%	70%	50%	30%	10%	SUBJECT TO EXTERNAL DAMAGE
					HIGH WEAR	MEDIUM WEAR	LOW WEAR	NON WEAR		
1	410241010	1	Cylinder							X
2	136301011	3	Cylinderplug							X
3	410241041	1	Piston				X			
4	410241150	1	Valve							X
5	410241190	1	Valve Chest							X
6	410241170	1	Valve Seat							X
7	410241200	1	Valve Guide							X
8	130401035	1	Valve Chest Dowel Pin							A
9	410241660	1	Plunger							X
10	130801040	1	Plunger Spring							X
11	410241480	1	Back Head(Bare)							X
12	131105017	1	O-Ring 6227-17	X						
13	136601011	2	Rubber Grip							X
14	410241E00	1	Throttle Pin							X
15	410201300	1	Throttle Valve Stem Guide							X
16	130801009	1	Throttle Valve Spring				X			
17	410241311	1	Throttle Lever							X
18	410201330	2	Throttle Lever Pin							A
19	134905010	1	Oilpiug U3/4-10							A
20	134901001	1	Pipe Plug PP-2 PT1/8							X
21	410241531	1	Front Head							X
22	130505048	1	PolyurethaneRubberBall3/4							A
23	131501015	4	BackHeadBolt							X
24	131301116	4	SpringWasher M16							X
25	410241510	4	Back Head Bolt Nut							X
26	410241591	1	Tappet Seat							X
27	410241581	1	Tappet					X		
28	410239610	1	Steel Retainer	X						
29	410241620	1	Steel Retainer Bolt				X			
30	134601019	1	Hex Nylon Nut UNF3/4-16				X			
31	131303048	1	SpringWasherW3/4				X			
32	136301010	2	Steel Retainer Bolt Bushing				X			
33	410241650	1	Steel Retainer Plunger				X			
34	130801042	1	Steel Retainer Spring				X			
35A	410271370	1	Air Connection Tube							X
35B	131103023	1	O-Ring S-29	X						
36	410271390	1	AirConnecTion Nut							X
37	131102002	1	O-RingG-30	X						
38	136801007	1	Air Inlet Screen							X
39	131501016	2	Front Head Bolt							X
40	410241550	2	Front Head Bolt Nut							X
41	410241560	2	Front Head Bolt Lock Washer							X
42	130801043	2	Front Head Bolt Spring							X
44A	410241572	1	FrontHeadBushing1-1/8"	X						
44B	410245572	(1)	FrontHeadBushing1-1/4"	X						
45	136101011	1	FeltOiler							X
50	130604040	1	Spring Pin4x40							X
51	410241760	1	Stop Lever							X
52	130801046	1	Stop Lever Spring							X
800	41024187C	(1)	MufflerCp							X
...	41024148A	(1)	BackHeadCp(Inc.Sym.No.11,13,14,15,17,18,19,20,45,50,51,52)							X
.....	41024153D	(1)	Front HeadCp1-1/8 (Inc.Sym.No.21,28,29,30,31,32,33,34,44A)							X
.....	41024553D	(1)	Front HeadCp1-1/8 (InCSym.No.21,28,29,30,31,32,33,3							X

This service chart is a guide to expectant life of component parts. The replacement levels are based on average tool usage over a one year period.

Example:For 10 tools in use:10 must-replace items will be required per year. 7 high wear items etc.

Note:Qu on titles must be in creased if the tool is in more service or continuous usage.

LEGEND
 x-Type of wear.If no other comments apply
 A-Easily lost or damaged during disassembly and reassembly.

Application and maintenance:

TPB-60 pneumatic breakers are precise tools which needs careful maintenance. The following rules shall be abided by during application.

The inner diameter of used windpipe shall be 19mm and pipe length should be not longer than 12m. The inside shall be kept clean and the joints of windpipe shall be firm. Add 20ml lubricant from the air inlet pipe every 3-4 hours under normal application. Do not let the pick drill insert into the broken object completely to avoid idle working. During application, dismantle it at least twice a week, clean it with clean diesel oil, blow it dry and apply lubricant before re-assembly and debugging. Replace the spare parts which are worn or invalid.

Safety Operation:

TPB-60 pneumatic breakers are not allowed to used lengthened hose jointed by worn and aged hose or straight steel to avoid personal injury caused by hose bursting and breaking off. Frequently check the firmness of the bolts at the windpipe joints. Moreover, check if the hose is tied soundly to avoid personal injury caused by breaking off of the windpipe joints and hoses. Used high-quality pick drill to prevent injury caused by breaking of the drill rod.

Troubleshooting:

If the TPB-60 pneumatic breaker does not work, or has low power or an uneven performance, check the following points:

- *Check that the chisel used has the correct shank dimension.
 - *Check that TPB-60 pneumatic breaker is getting the correct amount of lubrication. Note that too much lubricant may cause starting problems, low power or uneven performance.
 - *Check that the compressed air system supplies the machine with sufficient air pressure to get full power.
 - *Check that the dimension and length of air hose are in accordance to the recommendations.
- If there is a risk of freezing, check that the machine's exhaust ports are not blocked.

If the TPB-60 pneumatic breaker function is still not satisfactory after this procedure, contact an my company authorized service & supply company.